

In-Ceiling Speakers

CMi

SOUND TUBE<sup>®</sup>  
ENTERTAINMENT



+ Installation ease, high-performance sound

*Lead. Or follow.®*



### Installation Ease, High-Performance Sound



#### + Advancing the Science of Sound

SoundTube's focus on advancing design and engineering has created products and a brand that stands for true customer benefit and quantifiable value.

From retail to restaurant, entertainment

to education, safety to sport, SoundTube speakers have set new standards for performance, installation ease, style and value.

SoundTube has created a unique line of in-ceiling speakers engineered for a variety of

drop-tile and drywall applications, price points and audio performance requirements.

The result is that SoundTube's CMi in-ceiling speakers deliver full-frequency sound in all applications.

#### + Pushing the Boundaries of Acoustics

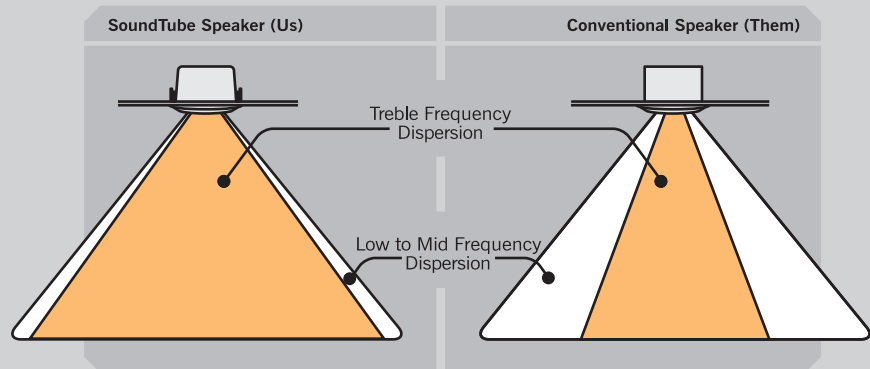
SoundTube has pushed the limits of acoustics and physics to develop several new audio technologies for new CMi in-ceiling speakers, including BroadBeam®.

Three years in development, BroadBeam® is a revolutionary treble dispersion technology that allows each speaker to cover more area with full-frequency sound.

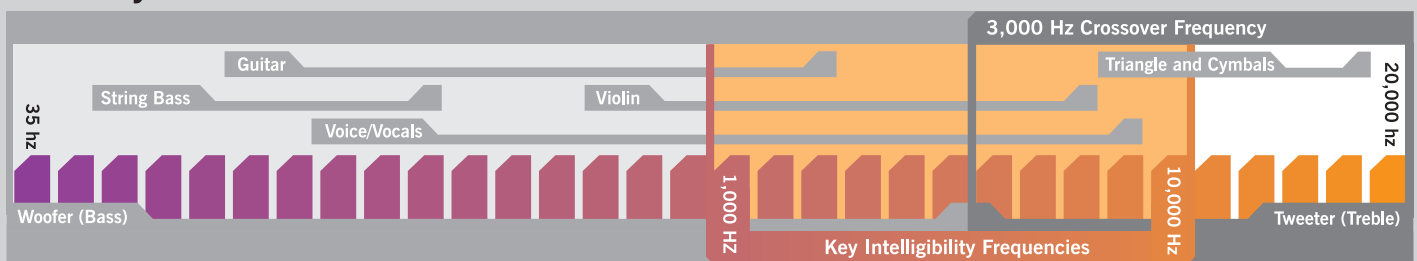
In concert with SoundTube's other proprietary technologies, BroadBeam® delivers superior performance and lower overall system costs.

#### + Delivering More Intelligible Sound

SoundTube speakers deliver better, more intelligible sound through BroadBeam® dispersion technology, which distributes the higher frequencies of sound in a wider, more effective pattern than conventional speakers. This allows for wider spacing of speakers and fewer speakers overall, without sacrificing intelligibility. The result is better sound at a lower cost.



#### Anatomy of Sound



+ Hapa Grille, Park City, Utah



+ Hong Kong Jockey Club, Hong Kong



+ Lane Crawford Department Store, China



## + Delivering Technology and Value

Every feature of SoundTube's CMi speakers is designed to maximize performance and benefit the customer – from the fixed-wing mounting mechanism and division-of-labor installation features to the advanced circuitry that provides crystal-clear intelligibility.

### + System compatibility

By using the same electro-acoustic components, SoundTube's CMi speakers are designed to sonically match SoundTube's RSi and SMi speakers for applications requiring combinations of hanging and mounted speakers.

### + BroadBeamHP® for high-power applications

For PA and sound reinforcement applications with crystal-clear intelligibility, SoundTube offers 5.25", 6.5" and 8" high-SPL models. These new high-output models include dedicated high sensitivity woofers and 1.36" compression drivers (except CM590i).



### + Full-frequency dispersion

The hallmark of SoundTube speakers is full-frequency sound dispersion, now made even more robust with BroadBeam®, SoundTube's revolutionary tweeter technology.



### + Adjustable output levels

CMi speakers include an easy-access multi-position tap switch that allows for 25, 70.7, 100 Volt or low impedance applications. For serious output CMi series transformers range from 33 to 120 Watts, depending on the model.



### + Fast-action wiring

Included with every new CMi speaker is a fast-action, 4-pin Euroblock connector that speeds wiring, simplifies daisy-chaining of multiple speakers and allows for pre-wiring.



### + Rapid-installation features

Rapid-installation features include metal Speed-Wing™ constant-tension mounting, tile bridge, magnetic grille & bezel and paint mask – all packaged with each speaker. Accessories include a pre-construction bracket and junction box for division-of-labor applications.



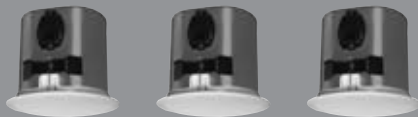


## + A creative company with no limits

No other speaker company takes the same approach to developing technology, bringing innovation to market and celebrating creativity in everything it does. Because of that, SoundTube continues to introduce products no other speaker company can match.



+ CMI Series	+ CM500i	+ CM590i	+ CM600i	+ CM690i	+ CM800i	+ CM890i	+ CM801i Sub	+ CM-EZ-II
<b>System Type</b>	5.25" Coax	5.25" Coax	6.5" Coax	6.5" Coax, High SPL	8" Coax	8" Coax, High SPL	8" Subwoofer	8" Coax
<b>Frequency Response (-3 dB)</b>	83 Hz - 22 kHz	86 Hz - 22 kHz	71 Hz - 22 kHz	74 Hz - 22 kHz	87 Hz - 22 kHz	77 Hz - 22 kHz	59 Hz - 101 Hz	79 Hz - 22 kHz
<b>Low Frequency (-10 dB)</b>	64 Hz	68 Hz	60 Hz	64 Hz	70 Hz	64 Hz	46 Hz	55 Hz
<b>Program Power RMS/Max</b>	75 / 150 Watts	80 / 160 Watts	90 / 180 Watts	100 / 200 Watts	125 / 250 Watts	125 / 250 Watts	125 / 250 Watts	40 / 80 Watts
<b>Sensitivity (2.83 V 1 M)</b>	88.5 dB	90.0 dB	92.0 dB	95.0 dB	93.0 dB	96.0 dB	89.0 dB	92.0 dB
<b>Sensitivity (1W 1 M)</b>	85.6 dB	88.4 dB	90.0 dB	93.0 dB	91.1 dB	94.0 dB	83.6 dB	91.6 dB
<b>Impedance (nominal)</b>	8 Ohm	8 Ohm	8 Ohm	4 Ohm	4 Ohm	4 Ohm	4 Ohm	8 Ohm
<b>Max SPL (dB @ 1 M)</b>	107.5 dB	109 dB	111.5 dB	113 dB	114 dB	115 dB	110 dB	108 dB
<b>Coverage Angle (-6 dB @ 2 kHz)</b>	80°	90°	95°	120°	85°	120°	N/A	110°
<b>Coverage Angle (-6 dB @ 10 kHz)</b>	100°	50°	90°	90°	95°	75°	N/A	60°
<b>Woofer</b>	5.25" Poly	5.25" Poly	6.5" Poly	6.5" Treated fiber	8" Poly	8" Treated fiber	8" Poly	8" Poly
<b>Tweeter</b>	1" Aluminum Dome	1" Aluminum Dome	1" Aluminum Dome	1.375" Comp. Driver	1" Aluminum Dome	1.375" Comp. Driver	N/A	1" Poly Dome
<b>Inputs</b>	4 Pin Euroblock	4 Pin Euroblock	4 Pin Euroblock	4 Pin Euroblock	4 Pin Euroblock	4 Pin Euroblock	4 Pin Euroblock	18-Gauge Wire
<b>Colors</b>	Black or White	Black or White	Black or White	Black or White	Black or White	Black or White	Black or White	Black or White
<b>Backcan Height</b>	10.71 in / 271.9 mm	10.71 in / 271.9 mm	14.76 / 375.0 mm	14.76 in / 375 mm	14.76 in / 375.0 mm	14.76 in / 375 mm	14.76 in / 375.0 mm	10.75in / 274 mm
<b>Diameter</b>	7.75 in / 197 mm	7.75 in / 197 mm	7.94 in / 201.7 mm	7.94 in / 202 mm	7.94 in / 201.7 mm	7.94 in / 202 mm	7.94 in / 201.7 mm	7.94 in / 201.7 mm
<b>Weight</b>	7.5 lbs / 3.4 kg	7.5 lbs / 3.4 kg	10.1 lbs / 4.6 kg	15.50 lb / 7.0 kg	12.5 lbs / 5.7 kg	17.10 lb / 7.8 kg	17.1 lbs / 7.7 kg	6.97 lbs / 3.16 kg



+ CMI Series	+ CM800d DEEP CAN	+ CM890d DEEP CAN	+ CM801d DEEP CAN SUB
<b>System Type</b>	8" Coax	8" Coax, High SPL	8" Subwoofer
<b>Frequency Response (-3 dB)</b>	63 Hz - 21.5 kHz	76 Hz - 22 kHz	38 Hz - 95 Hz
<b>Low Frequency (-10 dB)</b>	55 Hz	65 Hz	27 Hz
<b>Program Power RMS/Max</b>	125 / 250 Watts	125 / 250 Watts	125 / 250 Watts
<b>Sensitivity (2.83 V 1 M)</b>	92.5 dB	95.5 dB	93.5 dB
<b>Sensitivity (1W 1 M)</b>	92.5 dB	93.5 dB	93.5 dB
<b>Impedance (nominal)</b>	8 Ohm	4 Ohm	8 Ohm
<b>Max SPL (dB @ 1 M)</b>	111.5 dB	116.5 dB	114.5 dB
<b>Coverage Angle (-6 dB @ 10 kHz)</b>	85°	130°	N/A
<b>Coverage Angle (-6 dB @ 10 kHz)</b>	95°	75°	N/A
<b>Woofer</b>	8" Poly	8" Treated fiber	8" Poly
<b>Tweeter</b>	1" Aluminum Dome	1.375" Comp. Driver	N/A
<b>Inputs</b>	4 Pin Euroblock	4 Pin Euroblock	4 Pin Euroblock
<b>Colors</b>	Black or White	Black or White	Black or White
<b>Backcan Height</b>	14.76 in / 375 mm	14.76 in / 375 mm	14.76 in / 375 mm
<b>Diameter</b>	11.77 in / 299 mm	11.77 in / 299 mm	11.77 in / 299 mm
<b>Weight</b>	18.75 lb / 8.5 kg	23.90 lb / 10.9 kg	21.75 lb / 9.9 kg

SoundTube continually develops new product innovations and improvements. Updates to existing products without prior notice are an example of SoundTube's drive for constant improvement. For updated technical information download a technical data sheet from [www.soundtube.com](http://www.soundtube.com).

SoundTube® Entertainment manufactures a complete line of open-ceiling, in-ceiling, high-power, outdoor and sound-focusing speakers. All SoundTube products come with a 5-year limited warranty. All SoundTube products are designed and engineered in the USA.

© 2007 SoundTube Entertainment, Inc. All rights reserved.