

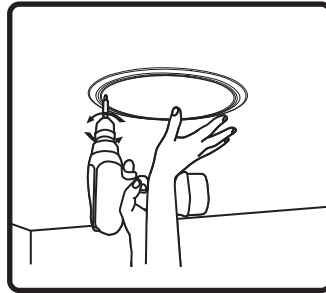
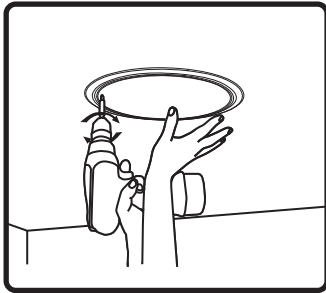


CM42-EZ Clamping System Issue

Tech Brief - October 29, 2015

There is a possible problem with the clamping system on this speaker which MAY cause the clamping mechanism to bind when tightening the clamping wing screws. In order to avoid this problem please take the following steps.

1. When initially tightening the clamping wing screw, go SLOWLY for the first few revolutions. If the system is going to bind up it will happen early in the process of tightening the wings.
2. If the screw does bind up, stop and rotate the clamping screw backwards (counterclockwise) just enough to take the pressure off the screw – ¼ turn is sufficient. You may hear a slight click when the screw is backed off. This is the clamping wing releasing and is OK.
3. Proceed to SLOWLY rotate the clamping screw clockwise (tighten). If the system binds up again, repeat the process (backing off the screw ¼ turn and then slowly tightening) until the clamping screw will turn freely.



4. It should not be necessary to repeat this process more than two, possibly three, times per mounting screw before the screw turns freely.

Following these steps will ensure that the clamping system on these speakers will work as intended and without any issues.

For further questions, please call SoundTube at 855-663-5600