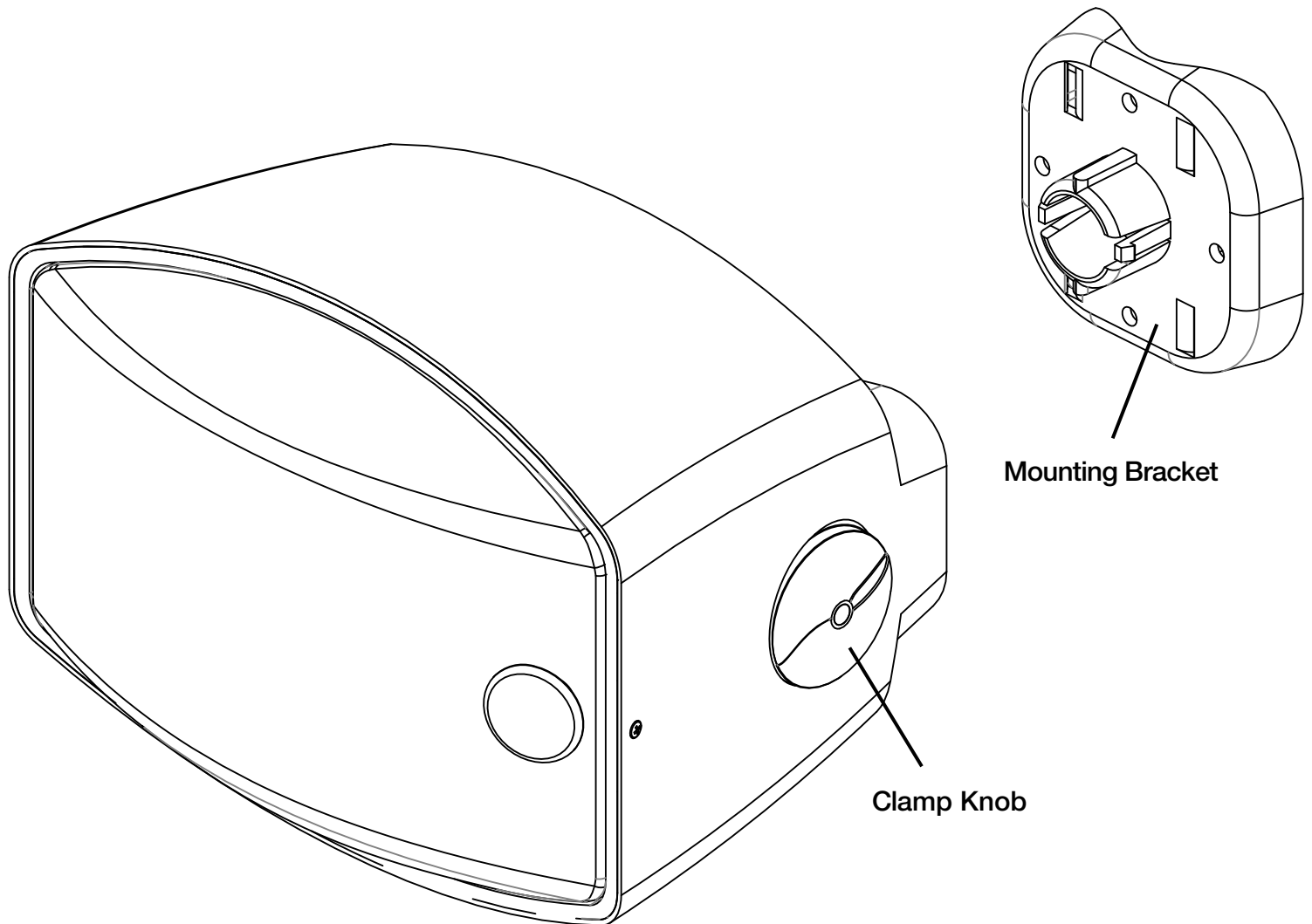




# IPD-SM5 Series

Installation instructions for:  
IPD-SM500i-II

1.913.663.5600 | 855.663.5600 | www.soundtube.com



Mounting Bracket

Clamp Knob

## Box Contents

- 1 Speaker
- 1 Mounting bracket
- 1 Safety cable
- 1 Safety cable anchor screws
- 1 Grille-mounted tap switch cover
- 1 Allen hex key

©2016 SoundTube Entertainment, Inc. All rights reserved. PM INS-IPD-SM5 rev 5.26.16

### Warning

SoundTube speakers must be installed by a professional audio installer/contractor. For safety and for optimum audio performance, installer must follow all directions issued by SoundTube Entertainment.

Haut-parleurs SoundTube doivent être installés par un installateur / contracteur de l'audio professionnel. Par mesure de sécurité et pour des performances audio optimales, l'installateur doit suivre toutes les directives émises par SoundTube Entertainment.

### Warning

Do not spec or install speaker near support beam, ventilation duct or other structure that may interfere with speaker function or dispersion.

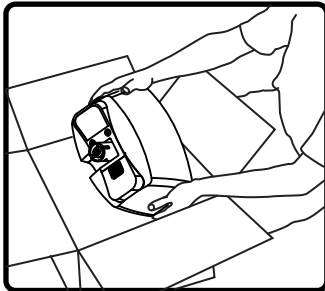
Ne spécifiez pas ou installer haut-parleur près de poutre de support, une conduite d'aération ou une autre structure qui pourrait interférer avec la fonction haut-parleur ou de dispersion.

## Important Safety Instructions

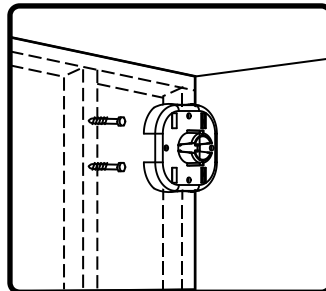
- 1) Read these instructions.
- 2) Keep these instructions.
- 3) Heed all warnings.
- 4) Follow all instructions.
- 5) Do not use this apparatus near water.
- 6) Clean only with dry cloth.
- 7) Do not block any ventilation openings. Install in accordance with the manufacturer's instructions.
- 8) Do not install near any heat sources such as radiators, heat registers, stoves, or other apparatus (including amplifiers) that produce heat.
- 9) Only use the attachments/accessories specified by the manufacturer.
- 10) Unplug this apparatus during lightning storms or when unused for long periods of time.
- 11) Refer all servicing to qualified service personnel. Servicing is required when the apparatus has been damaged in any way, such as power-supply cord or plug is damaged, the apparatus has been exposed to rain or moisture, does not operate normally, or has been dropped.

## Consignes de sécurité importantes

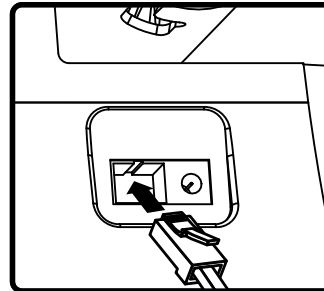
- 1) Lisez ces instructions.
- 2) Conservez ces instructions.
- 3) Respectez tous les avertissements.
- 4) Suivez toutes les instructions.
- 5) Ne pas utiliser cet appareil près de l'eau.
- 6) Nettoyer seulement avec un chiffon sec.
- 7) Ne pas bloquer les ouvertures de ventilation. Installer conformément aux instructions du fabricant.
- 8) Ne pas installer près de sources de chaleur telles que des radiateurs, registres de chaleur, poêles ou autres appareils (incluant les amplificateurs) qui produisent de la chaleur.
- 9) Utiliser uniquement les fixations / accessoires spécifiés par le fabricant.
- 10) Débranchez cet appareil pendant les orages ou si inutilisé pendant de longues périodes de temps.
- 11) Confiez toute réparation à un personnel qualifié. Une réparation est nécessaire lorsque l'appareil a été endommagé de quelque façon que ce cordon d'alimentation ou la fiche est endommagé, l'appareil a été exposé à la pluie ou à l'humidité, s'il ne fonctionne pas normalement ou s'il est tombé.



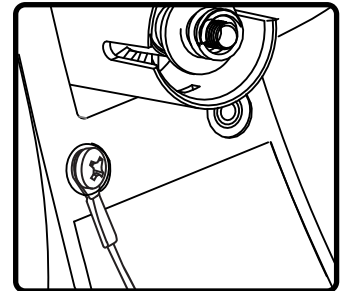
1. Unpack speaker and mounting hardware.



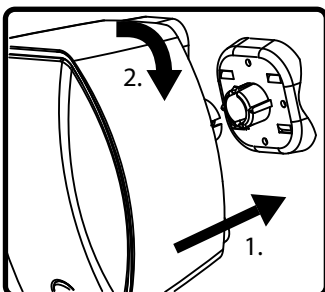
2. Choose a secure mounting surface with sufficient strength to reliably hold the speaker. Note: Bracket orientation does not matter for installation of the mounting bracket.



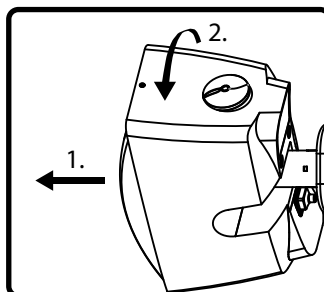
3. Plug ethernet cable into RJ45 jack. If local power is required at speaker (non-POE installation), connect appropriate DC power supply to barrel connector on speaker input panel. Contact SoundTube for questions about installations requiring local power.



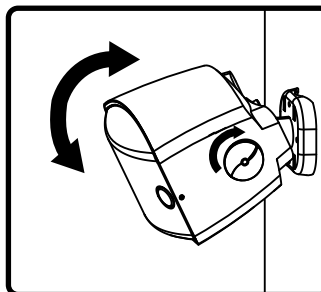
4. Use supplied safety screw to connect the safety cable to one of the inserts on the rear panel of the speaker. Connect other end of the safety cable to a secure mounting point.



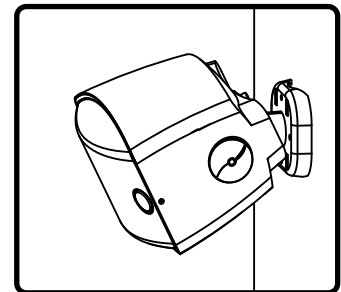
5. Line up bracket ribs with mounting tube slots and press speaker onto bracket. Twist clockwise until speaker clicks. Speaker is now locked in place.



6. Firmly grip speaker and pull it away from the wall to rotate to desired mounting angle about the mounting shaft axis. Simply release speaker back toward the wall to lock into place.



7. Make sure knob is loose, and aim speaker in desired direction (0 to 90). Tighten the knob to lock the speaker in place. FINGER TIGHT IS SUFFICIENT-DO NOT OVER TIGHTEN.



8. Done.

To loosen, use included hex key.